

2nd Half of Summer Term

Our big question this half term is “Who likes to be beside the seaside?”

We will explore the water cycle, different bodies of water, the seaside and much more. We are looking forward to our trip to Aberystwyth to enhance our learning of seaside towns.

Physical Development

PE days will be Wednesdays (swimming) and Thursdays. Children should come PE ready both days with their swimming kit in a separate bag. On Thursdays we will focus on net/wall games.

We will continue to develop our fine motor skills in school but it is also a great thing to practise at home too!

PSHE

This half term, we will focus on ‘Super Me’, exploring all things about ourselves as we get ready to transition into year one.

Expressive Art and Design

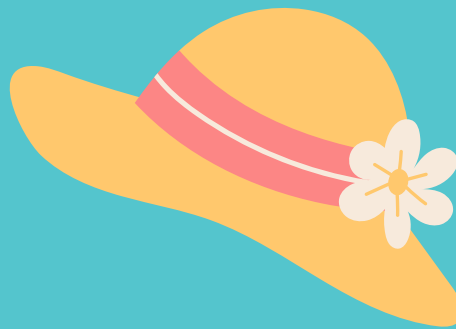
This half term we will explore how to use different printing techniques to create our own artwork. We will also investigate how to create sand sculptures.

Literacy

This half term we will be exploring a range of texts such as The Storm Whale, The Lighthouse Keeper and Lilah and the Secret of Rain.

We will be moving onto level 5 sounds and tricky words. Please continue to practise previous sounds and tricky words at home.

Our word and nursery rhyme of the week is posted on Seesaw.



Please remember to name your child's sun hat and sun cream so they can be easily identified.

Maths

This half term we are working on:

- Adding
- Taking away
- 2D shapes
- 3D shapes
- Manipulating shapes
- Pattern
- Position